

SYNERFILL BODY



What is PLLA?

PLLA(Poly-L-lactic acid) is a biocompatible, biodegradable, immunologically inert synthetic polymer that stimulates collagen synthesis, leading to gradual volume reestablishment. As the PLLA microparticles degrade, the inflammatory reaction responsible for the degradation of the particles promotes the formation of fibrous connective tissue and neocollagenesis, leading to gradual volume replacement. In addition, PLLA increases fibroblast activity and stimulates collagen synthesis.

What is H-HA+L-HA?

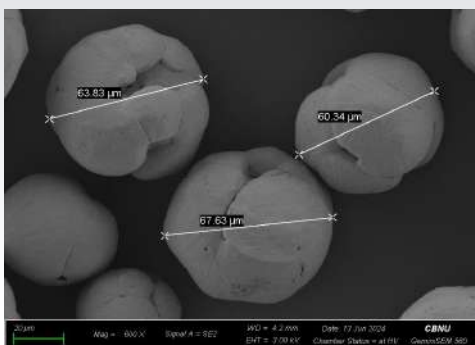
Hyaluronic acid (HA) is dermal agent for the correction of age-related soft tissue defects, such as skin laxity, loss of hydration, wrinkle formation and roughening of skin texture.

H-HA(high-molecular-weight hyaluronic acid) and L-HA(low-molecular-weight hyaluronic acid) is injectable formulation of cooperative hybrid HA complexes.

SYNERFILL is the specially compounded PLLA+H-HA+L-HA collagen stimulating and lifting filler that stimulates collagen inside of skin to induce collagenesis and improves wrinkles and restore facial volume losses.

Also helps reduction of wrinkle depth, smoothing of skin texture and improves skin hydration, skin compliance & skin elasticity.

SEM picture of SYNERFILL PLLA

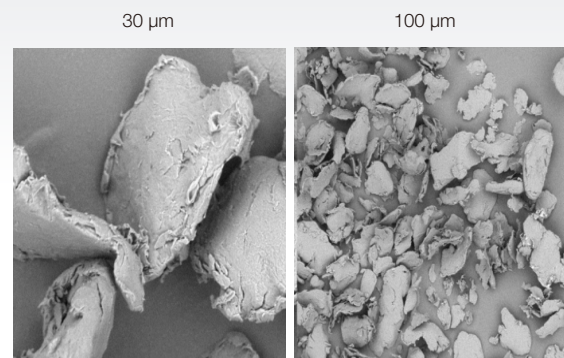


SYNERFILL has a spherical shape with internal pores, so when collagen is synthesized, a larger amount of collagen is produced and its duration is longer.

Due to the nature of PLLA, its duration is longer at 2 years compared to other companies' PLLA and PDLLA.

When injecting subcutaneous fat layer, pain is minimized by using a thin needle.

SEM Picture of other company



Strong point of SYNERFILL

| | | | |
|--------------------------|---|---|--|
| Company | G*** | V**** | SYNERFILL |
| Product | S**** | J**** | SYNERFILL Body(520mg) |
| Material | PLLA CMC Mannitol | PDLLA HA | PLLA L-HA H-HA |
| Powder Shape | Broken stone shape | Broken stone shape | Microporous Sphere |
| Volume | 368mg PLLA - 150mg CMC - 90mg Mannitol - 128mg | 368mg PLLA - 150mg CMC - 90mg Mannitol - 128mg | 520mg PLLA – 400mg H-HA – 60mg L-HA – 60mg |
| Collagen production rate | High | Medium | High |
| Persistence | 24 month | 6 ~ 12 month | 24 month |
| Immediate impact | No | Yes | Yes |
| Elastin production | No | Midium | High |

SYNERFILL: Advanced Bio Stimulator

Ingredients

- PLLA (Poly-L-lactic acid): 400mg
- H-HA: 60mg
- L-HA: 60mg

Indication

- Stimulation and generation of collagen under the skin
- Reducing fine wrinkles
- Smoothing of skin texture
- Improves skin hydration, skin compliance, skin elasticity
- Volume replenishment

Treatment Area

- Breast, Buttock, Vagina, Genital Organ of Female and Male, Penis Shaft, Back of Hand

Why SYNERFILL?

- Long lasting
- Evenly restores volume & improves deep wrinkles
- Quick procedure and effect
- No residues left in the body
- FDA Proven Safety

Treatment

- 2~3 Treatments / 1 month interval

Duration

- 24 months

Volume

- 520 mg / vial / box



Before and After Treatment Example

SYNERFILL BODY 520mg/vial (18mL of suspension solution diluted with 14mL of sterile saline and 4mL of 2% Lidocaine)



PLLA – Breast and Buttock treatment example

